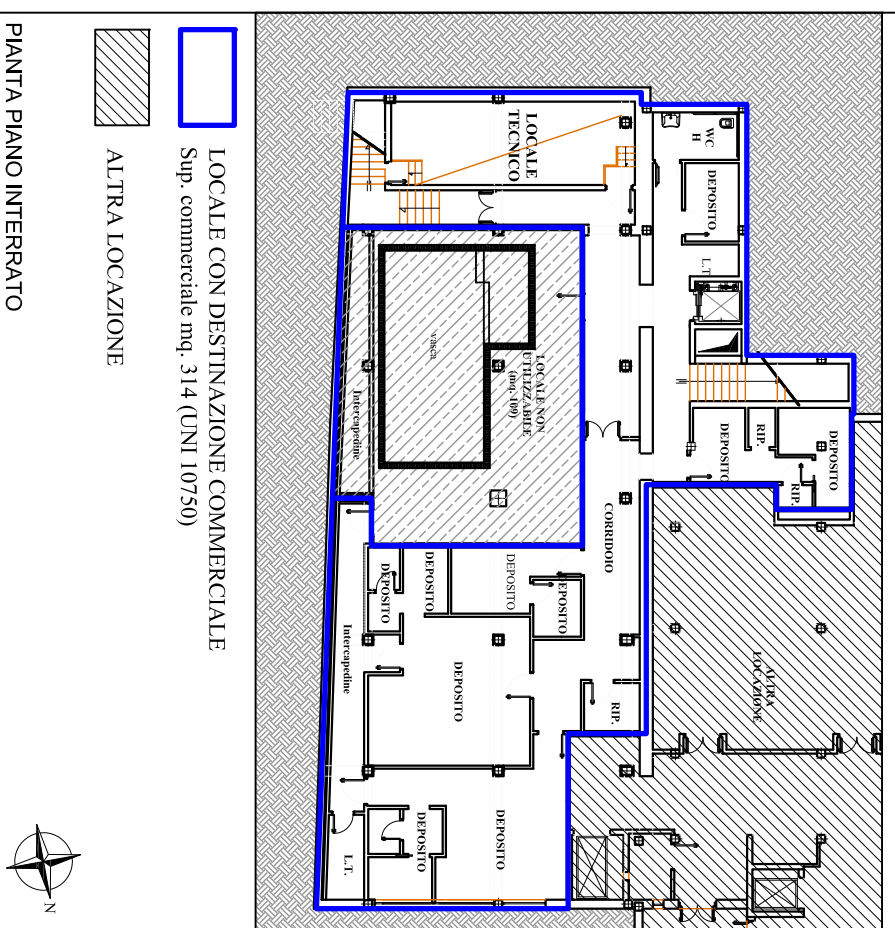
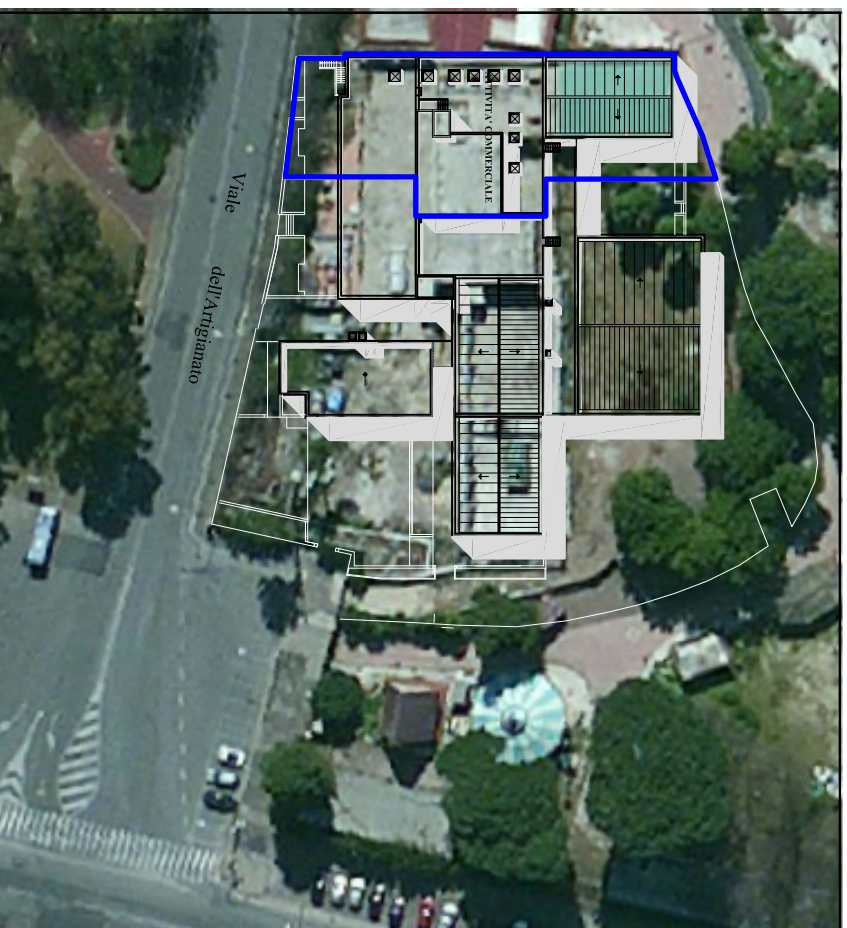
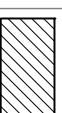


PLANIVOLUMETRICO GENERALE



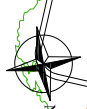
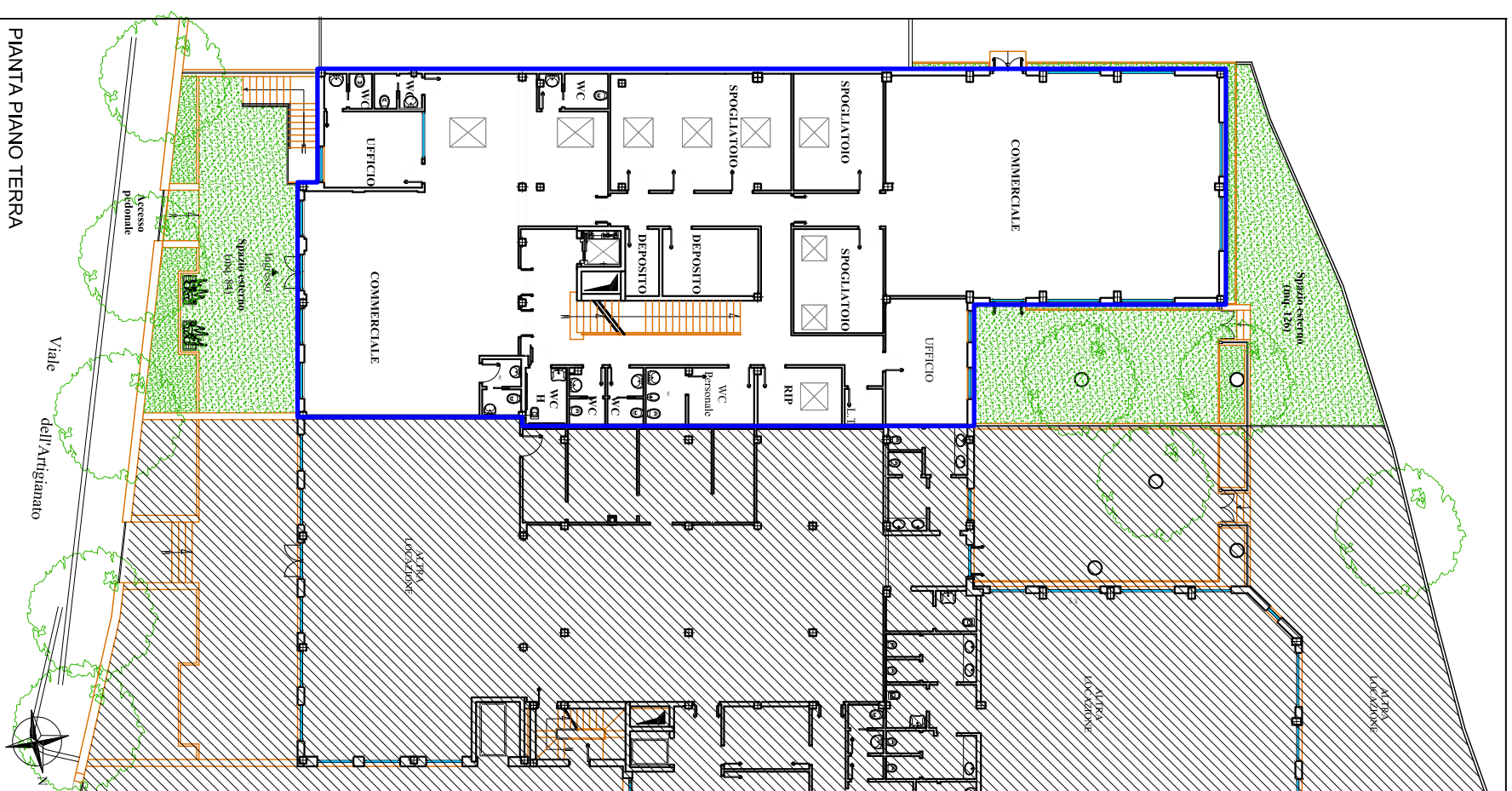
LOCALE CON DESTINAZIONE COMMERCIALE  
 Sup. Commerciale mq. 585 (UNI 10750)  
 Sup. Aree Esterne mq. 210



ALTRA LOCALIZZAZIONE



AREE ESTERNE



LOCALE CON DESTINAZIONE COMMERCIALE  
 Sup. Commerciale Uffici mq. 109 (UNI 10750)  
 Sup. Terrazze praticabili mq. 432



ALTRA LOCALIZZAZIONE

